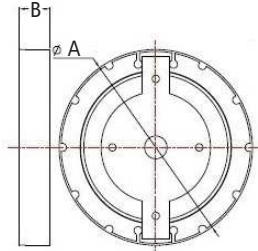


Noah Flush-Round



Product ID *	A	B
VLCLR-008-LED006xx	120	40
VLCLR-008-LED009xx	120	40
VLCLR-008-LED012xx	120	40
VLCLR-008-LED015xx	120	40
VLCLR-008-LED018xx	120	40
VLCLR-008-LED024xx	120	40

All Dimension in "mm"



Specifications & Features

- * Die cast Aluminum housing with highly efficient PMMA / Opal diffuser
- * High energy saving Vis a Vis Traditional fluorescent- 60% compared to CFL/PLC luminaires
- * External constant current driver
- * More than 85% driver efficiency
- * Wide operating voltage 100 - 277Vac
- * Color Rendering Index (CRI) > 80
- * Working ambient temperature -20°C to +40°C
- * Rated life 50,000 Hrs (Ta = 30°C @ L70)
- * High intensity of illumination with 120° beam angle
- * Uniform diffuse & excellent glare control
- * Instant start without flash & humming
- * Electric wave & radio interference free
- * Without mercury, UV & IR radiation
- * IP 20 Ingress protection

Applications

- * Corridor
- * Kitchen
- * Hotels
- * Portico lighting
- * Wall lighting
- * Hospitality
- * Offices

Installation & Maintenance

- * Feasible for surface mounting
- * Power supply should be disconnected before service

Note: Earthing (⊕) must be connected properly to avoid any premature failure.



Technical & Ordering Information

Product ID / Ordering code	Product Description	Wattage(W)	Nominal Voltage (V)	Mains Current(A)	CCT (K)	Lumen (lm)
VL/CLR-008-LED00665	Noah flush Rnd LED Ceiling light 06/ CW	6	230	0.033	6500	540
VL/CLR-008-LED00965	Noah flush Rnd LED Ceiling light 09/ CW	9	230	0.045	6500	810
VL/CLR-008-LED01265	Noah flush Rnd LED Ceiling light 12/ CW	12	230	0.057	6500	1080
VL/CLR-008-LED01565	Noah flush Rnd LED Ceiling light 15/ CW	15	230	0.070	6500	1350
VL/CLR-008-LED01865	Noah flush Rnd LED Ceiling light 18/ CW	18	230	0.085	6500	1620
VL/CLR-008-LED02465	Noah flush Rnd LED Ceiling light 24/ CW	24	230	0.115	6500	2160

*xx Also available in 3000 & 4000K CCTs

Intensity Distribution Diagram

Light Intensity curve for reference only

